

Paint Marking System

Paint Jet Printer

PJ-2



PJ-2: The best selection for a high quality / large size character marking

With the atomized paint spray, PJ-2 performs the marking of the **large characters** with 43mm to 142mm height on the surface of **up to 300°C**, thus, is the most suitable for the marking of steel plates and coils.



Controller / Pump Unit

FEATURES

Distinct dot-matrix marking

Distinct dot-matrix marking with large dots (approx. 7mm diameter) ensures excellent contrast to the surface to be marked. Size of the extra large characters is approx. 142mm height x 106 mm width (nozzle angle 90°, dot pitch 9 mm) which can be identified from a long distance, e.g. from the overhead crane.

Marking on high temperature surface

Special paint and duplex-nozzle enable the marking on the surface of up to 300°C.

Quick-drying

Atomized paint spray system realizes quick-drying of the paint of markings.

Failure self-diagnosis system

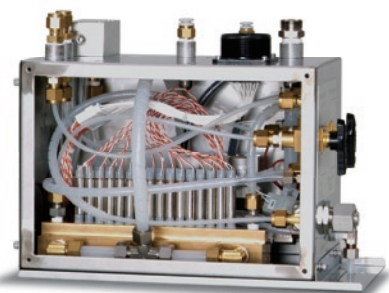
PJ-2 has the self-diagnosis system that monitors the operation of the machine continuously and diagnoses its conditions. When a failure is detected, information of the failure is displayed on the touch panel of the controller and an alarm signal is output.

Early resumption of operation

The countermeasure against the failure is taken promptly according to the information displayed on the panel and the analyzed communication log.

High-speed marking

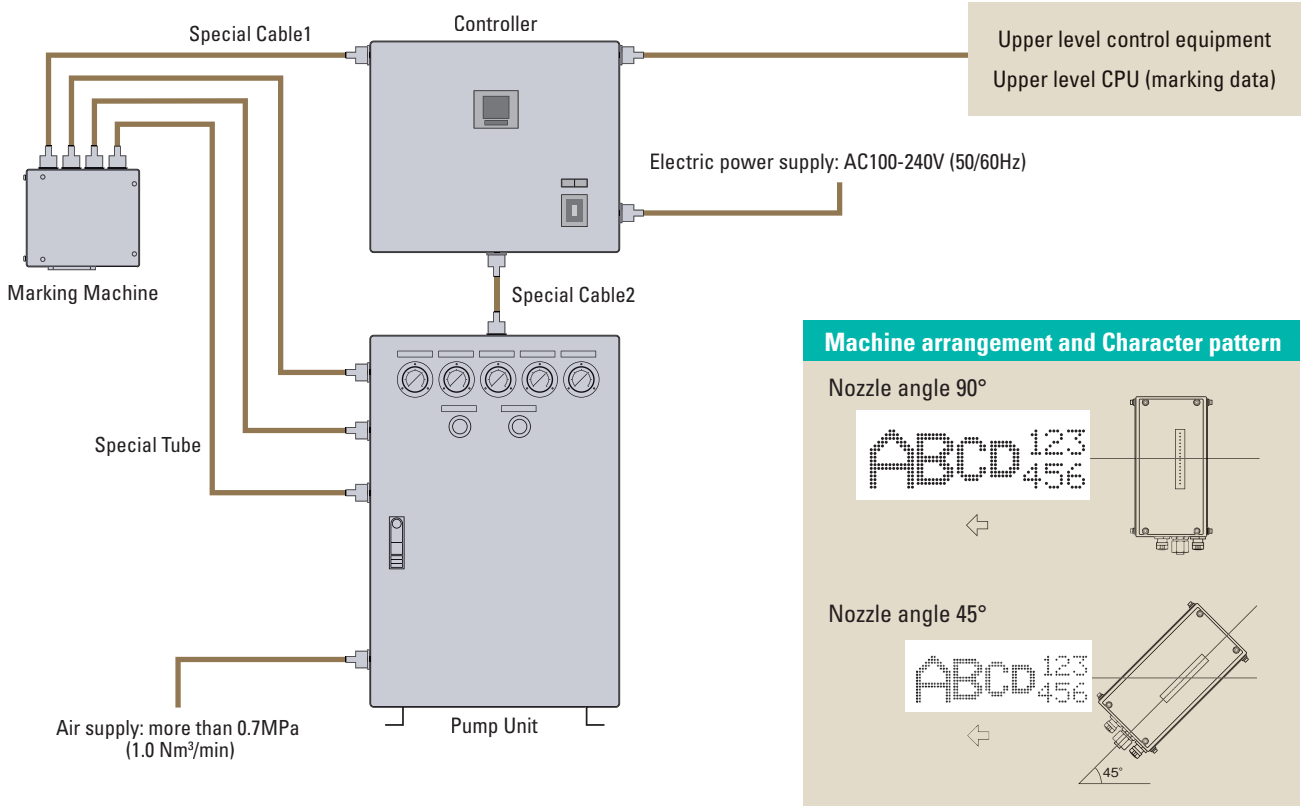
Maximum marking speed is 120m/min (nozzle angle 90°).



Marking Machine

SYSTEM CONFIGURATION

PJ-2 is composed of Marking Machine, Controller, Pump Unit and Special Tubes/Cables for components' interconnection.



EXAMPLE OF APPLICATION (Steel Plate)



SPECIFICATION

Type	PJ - 2			
Type of character	• Numerals: 10 • Alphabets: 26 • Symbols: 28kinds • Special letters: Max. 200 kinds (can be registered)			
Size of character	Size	Dot Constitution H × W	Size of character (Height × width mm)	
			Nozzle angle 90°	Nozzle angle 45°
	Small	7 × 5dot	61 × 43	43 × 30
	Medium1	10 × 8	88 × 70	62 × 49
	Medium2	12 × 8	106 × 70	74 × 49
Large	14 × 10	124 × 88	87 × 62	
Ext. large	16 × 12	142 × 106	100 × 74	
Max. marking speed	Nozzle angle 90°: 120mpm, Nozzle angle 45°: 85mpm			
Marking function	• Pulse synchronized / non-synchronized marking • Normal / reverse marking • Character size selection • Repeat marking • Numbering marking • Two lines marking • Block marking • Inverse character marking • Long space marking			
Max. number of marking character	2,048 digits (maximum text data receivable)			
Marking distance	Distance between nozzle tip and objective surface: 15mm			
Alarm function	• Paint/Remover level • Air pressure • Memory error • Communication error • Signal input error etc (Information of the failure is displayed on the touch panel of the controller and an alarm signal is output (open collector))			
Operation I / F	• Input (photo-coupler isolated 24V): 22 points • Output (open collector): 18 points			
Communication I / F	Ethernet (TCP/IP)			
Encoder input	DC 5V / 12V / 24V open collector (for external synchronization)			
Electric power supply	AC100 - 240V (50 / 60Hz) single phase, 85VA			
Air supply	More than 0.7MPa, 1.0 Nm ³ / min			
Ambient temperature	0 - 45°C, without dew formation			
Standard component	Marking Machine	Measurement: 180H×255W×150D (approx. 7.6kg) Coating: Stainless steel without coating		
	Controller	Measurement: 450H×530W×530D (approx. 42.0kg) Coating: Stainless steel without coating		
	Pump Unit	Measurement: 875H×530W×530D (approx. 80.0kg) Coating: Stainless steel without coating		
	Special Cable	① Marking Machine – Controller (10m or 20m) ② Pump Unit – Controller (250mm)		
	Special Tube	Marking Machine – Pump Unit (7 tubes) (Max. 20m)		
	Standard accessory	Maintenance software (OS: Windows XP / Vista, Ethernet connection)		
Controller Panel	• Touch Panel • Power on/off switch • Indication LED lamp (power)			
Option	Heat exchanger or Cooler for Controller RS-232C communication I / F Line driver encoder input Air Compressor and Tank			

SPECIAL PAINT AND REMOVER

	Type	Eco type
Paint	Color	PMK
		White
Remover	Type	Remover PMK

* MSDS (Material Safety Data Sheet) is available upon request. The special paint and the remover are classified as hazardous material for international transportation.

Integrated supplier of Non-Destructive Testing and Marking



MARKTEC Corporation

Head Office 17-35, Omori Nishi 4-chome, Ota-ku, Tokyo 143-0015 Japan
Tel: +81-3-3762-4451 Fax: +81-3-3764-4337
URL: <http://www.marktec.co.jp/>

Service Center (East) Tel: +81-3-3765-1712 Fax: +81-3-3768-3958
(West) Tel: +81-6-4861-3700 Fax: +81-6-4861-3702

Narita Plant Tel: +81-476-49-3160 Fax: +81-476-49-3181

☞ All specifications and designing are subject to change without notice.